

87

random / cluster

A matrix of hot glass is stretched and folded back onto itself numerous times as it cools. Air is trapped between the folds and stretched along the grain of the loop, creating microfilaments that give the piece a pearlescent optical quality. A light source is introduced at one end of the loop casting light through the microfilaments and registering a gentle gradient.



87

random / cluster



Lamping

1.8w LED or 10w xenon

Material

pulled glass, braided metal coaxial cable, electrical components, and brushed nickel or white powder coated canopy

Patent

Worldwide patents pending
EU Patent # 03611144 - 0005-0009



±115-240 (4.5'-9.5')

±300-500 (12'-20')

87

random / cluster

Adjustable Lengths
Random canopies

87.1



87.1



87.1m



87.1mi



87.1mo



87.3



87.5



87.7

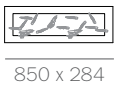


adjustable
up to
3000 (10')
standard

adjustable
up to
30500
(100')
custom

Fixed Lengths
Random canopies

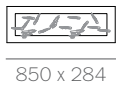
87.11



87.11



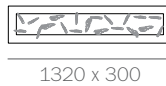
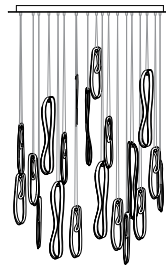
87.14



87.14



87.20



87.26

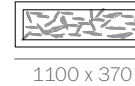


87.26

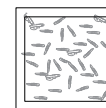


600

87.36



87.36



fixed
length
up to
3000 (10')
standard

fixed
length
up to
30500
(100')
custom

755

87

random / cluster

Adjustable Lengths

Non-swig Cluster canopies

87.3



Ø152

87.7



Ø203

adjustable
up to
3000 (10')
standard

adjustable
up to
30500
(100')
custom

Fixed Lengths

Non-swig Cluster canopies

87.19



Ø501

87.37



Ø600

87.61



Ø707

fixed
length
up to
3000 (10')
standard

fixed
length
up to
30500
(100')
custom

87

random / cluster



Designed by Omer Arbel, 2017
www.bocci.ca



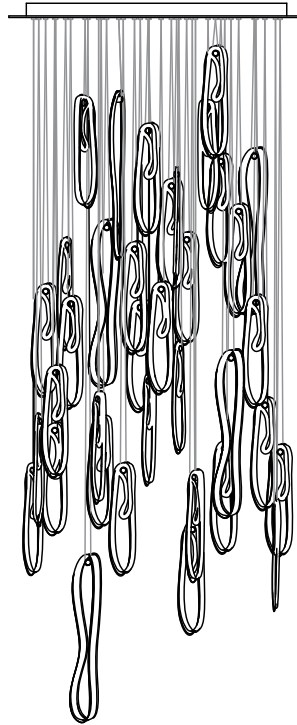
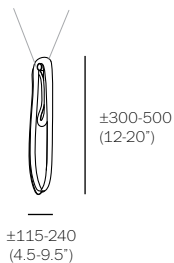
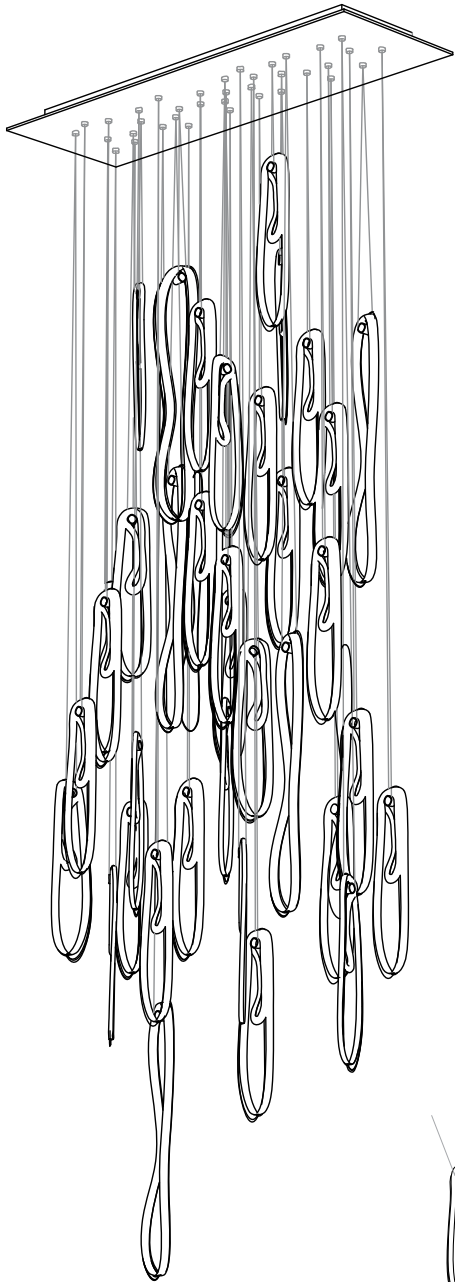
BOCCI

© 2018, Bocci Design and Manufacturing Inc.
Any inquiries should be directed to: info@bocci.ca

87

random / cluster





53 (2')
up to 3000 (10') standard
up to 30500 (100') custom

240 (9.5') 370 (14.6')

970 (38')

1100 (43.3')

approx 64.5kg (142lb)

PENDANTS: thirty-six
MOUNTING: white powder coated rectangular canopy 1100mm (43.3') x 370mm (14.6') x 53mm (2') deep
LAMPING: 1.8w LED or 10w xenon
COAX: fixed lengths. 3000mm (10') standard / up to 30500mm (100') maximum
MATERIALS: pulled glass, braided metal coaxial cable, electrical components, white powder coated canopy
WEIGHT: approximately 64.5kg (142lb)
TRANSFORMERS: integral (remote mount recommended)

DESCRIPTION

87.36 is a random configuration of thirty six 87 pendants hung from a rectangular canopy. The drop lengths of the pendants are randomized between a client specified range of heights to variously cluster and scatter. The result is an ambient installation or field of light.

A matrix of hot glass is stretched and folded back onto itself numerous times as it cools. Air is trapped between the folds and stretched along the grain of the loop, creating microfilaments that give the piece a pearlescent optical quality. A LED light source is introduced at one end of the loop casting light through the microfilaments and registering a gentle gradient.

NOTES

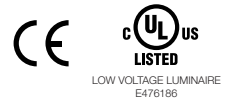
- + Purchase replacement lamps online at www.bocci.ca/lamps
- + Unless otherwise noted when ordering, all chandeliers will be outfitted to be xenon compatible.
- + As an alternative to built-in transformers, Bocci strongly recommends mounting transformers remotely in an easily accessible and hidden location for ease of long-term maintenance.

Worldwide patents pending
EU Patent # 03611144 - 0005-0009

Made in Vancouver, Canada

Vancouver
sales@bocci.ca
www.bocci.ca

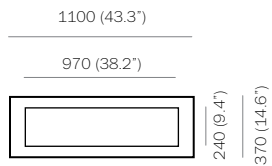
Berlin
europe@bocci.ca
www.bocci.ca



RECTANGLE

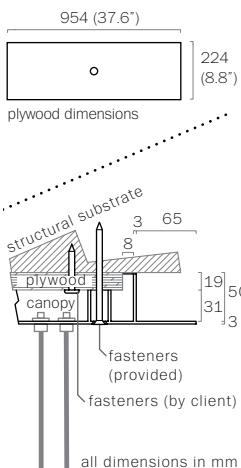
87.36

Design by Omer Arbel
PRODUCT SPECIFICATION



1

Measure and mark the light fixture canopy position on the ceiling



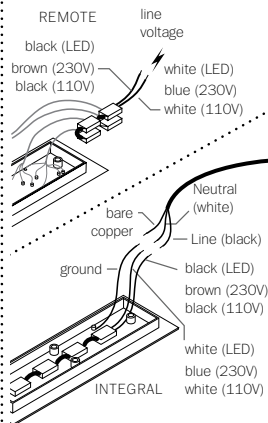
2

Note: The client is responsible for providing a robust 19mm (3/4") plywood backing or wood blocking to securely anchor to the structural substrate.

Connections from the plywood to the structural substrate are the client's responsibility.

Measure the plywood so that it fits within the canopy side walls (refer to detail above).

Anchor the plywood backing to the structural ceiling substrate.



3

Connect transformers inside the canopy to line voltage.

Xenon (110V) or LED: connect the black wire to black and white wire to white wire.

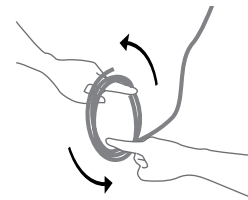
Xenon (230V): connect black wire to brown wire and white wire to blue wire.

For the ground connection, connect the green wire with yellow stripe to the bare copper wire or green wire in the junction box.

Note: As an option, Bocci recommends mounting transformers remotely in a close, accessible and hidden location for ease of long term maintenance. Installation to be done by certified personnel to ensure compliance with the code.

4

Anchor canopy into the plywood backing using the fasteners provided.



5

Very carefully uncoil the braided coaxial cable in a spool like manner. Insert your index fingers into opposite sides of the roll then rotate your fingers around each other to unroll the coaxial cable.

Use patience: allow the cable to uncoil completely to avoid kinks.



6

Each pendant terminates in a "headphone jack" type connector, which plugs into a receiving receptacle in the canopy.

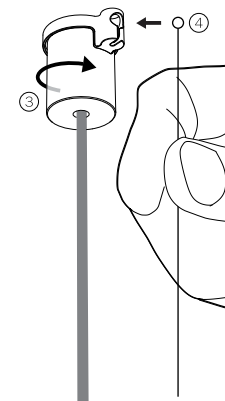
Rest the swag ring on the threaded sheath.

Plug in headphone jack.

7

Turn the threaded sheath into place by hand ensuring that it is adequately tightened. Tools are not required.

Slide the ball end of the aircraft cable into the swag ring slot and pull down. Make sure the aircraft cable is seated properly.



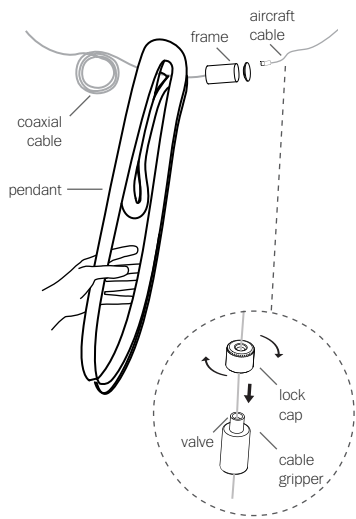
RECTANGLE

87.36

Design by Omer Arbel
PRODUCT INSTALLATION INSTRUCTIONS

© 2017, Bocci Design and Manufacturing Inc. All rights reserved. Any inquiries should be directed to: info@bocci.ca

BOCCI

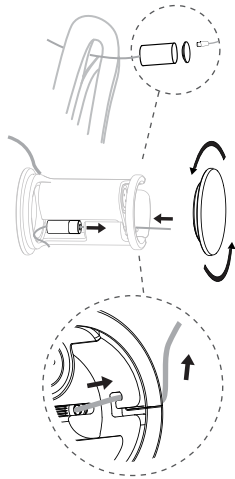


8

Loosen the lock cap and push the valve on the cable gripper and adjust the position of the cable gripper so that the aircraft cable is roughly the same length as the coaxial cable.

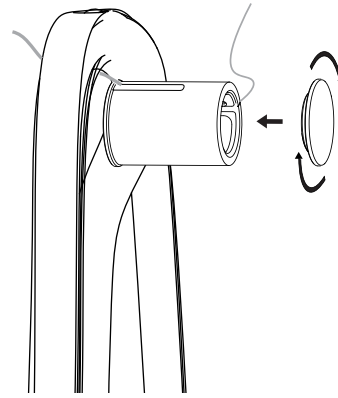
Thread the lock cap back into place, hand tighten and apply a load to the cable to ensure it is locked.

Thread the frame assembly through the top hole of the 87 pendant.



9

Unscrew frame cap opposite to the coaxial cable. Hook the cable gripper into the pocket inside the frame and guide the cable through the u-shaped hook in the frame and the silicone tube.



10

Screw frame cap back onto the frame assembly.



11

Rest pendant onto frame assembly.

If needed, repeat step 8 to adjust the position of frame.

Note: Frame assembly should hang level. The swag cable and the coaxial cable should be approximately the same length.



12

Clean fingerprints from glass surfaces.

Turn fixture on.

For additional assistance, please contact Bocci:

Vancouver
sales@bocci.ca
www.bocci.ca

Berlin
europe@bocci.ca
www.bocci.ca

Worldwide patents pending
EU Patent # 03611144 - 0005-0009

Made in Vancouver, Canada



LOW VOLTAGE LUMINAIRE
E476186

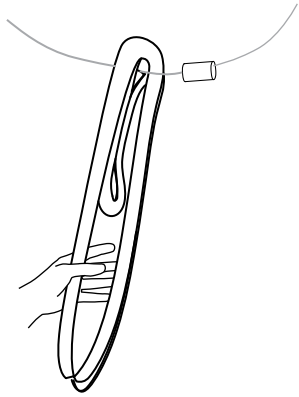
RECTANGLE

87.36

Design by Omer Arbel
PRODUCT INSTALLATION INSTRUCTIONS

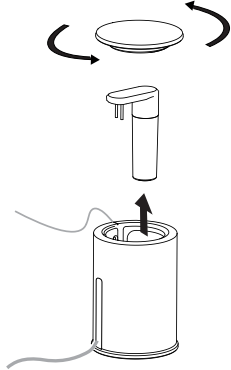
© 2017, Bocci Design and Manufacturing Inc. All rights reserved. Any inquiries should be directed to: info@bocci.ca

BOCCI



1

Lift glass off of lamp holder assembly and hold securely.



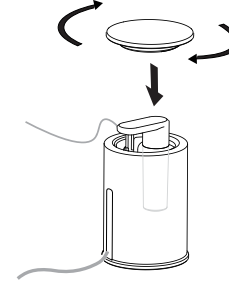
2

Unscrew cap at the aircraft cable end of the lamp holder assembly. Push coaxial cable through the slot in the silicone sheath, and remove lamp and lamp adapter.



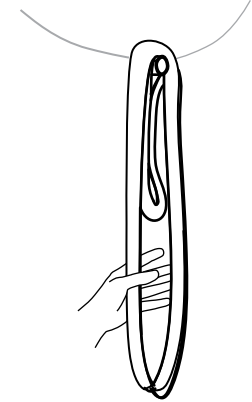
3

Remove lamp from lamp adapter and replace with new bulb.



4

Screw cap back onto the lamp holder assembly.



5

Gently rest pendant back onto lamp holder assembly.

Clean fingerprints from glass surfaces.

Turn fixture on.

For additional assistance,
please contact Bocci:

Vancouver
sales@bocci.ca
www.bocci.ca

Berlin
europe@bocci.ca
www.bocci.ca

Worldwide patents pending
EU Patent # 03611144 - 0005-0009

Made in Vancouver, Canada



LOW VOLTAGE LUMINAIRE
E476186

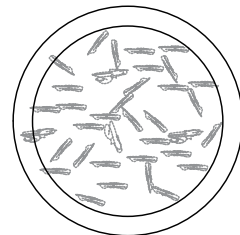
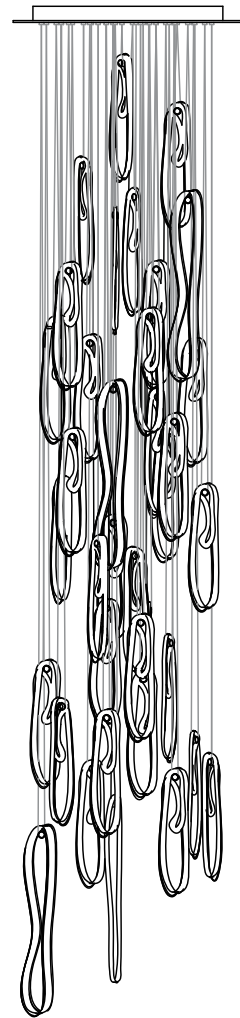
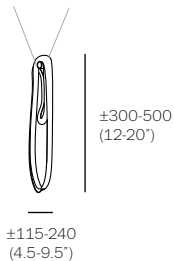
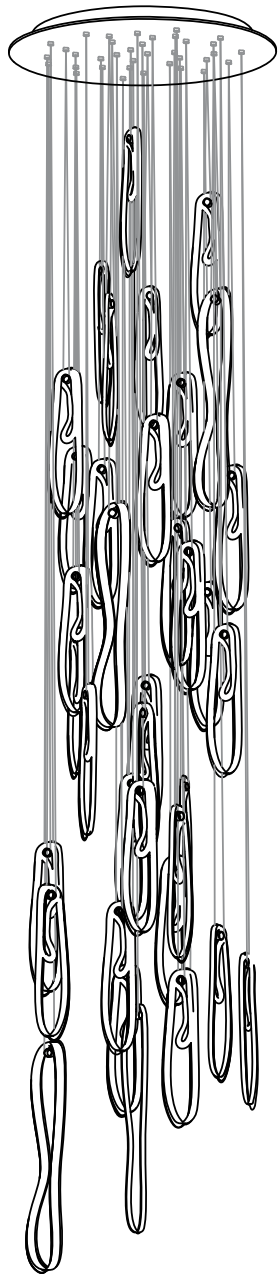
RECTANGLE

87.36

Design by Omer Arbel
LAMP REPLACEMENT INSTRUCTIONS

© 2017, Bocci Design and Manufacturing Inc. All rights reserved. Any inquiries should be directed to: info@bocci.ca

BOCCI



53 (2")
up to
3000
(10')
standard

up to
30500
(100')
custom

625
(24.6")

755
(29.7")

approx 64.1kg (141lb)

- PENDANTS: thirty-six
- MOUNTING: white powder coated round canopy 755mm (29.7") in diameter x 53mm (2") deep
- LAMPING: 1.8w LED or 10w xenon
- COAX: fixed lengths. 3000mm (10') standard / up to 30500mm (100') maximum
- MATERIALS: pulled glass, braided metal coaxial cable, electrical components, white powder coated canopy
- WEIGHT: approximately 64.1kg (141lb)
- TRANSFORMERS: integral (remote mount recommended)

DESCRIPTION

87.36 is a random configuration of thirty six 87 pendants hung from a round canopy. The drop lengths of the pendants are randomized between a client specified range of heights to variously cluster and scatter. The result is an ambient installation or field of light.

A matrix of hot glass is stretched and folded back onto itself numerous times as it cools. Air is trapped between the folds and stretched along the grain of the loop, creating microfilaments that give the piece a pearlescent optical quality. A LED light source is introduced at one end of the loop casting light through the microfilaments and registering a gentle gradient.

NOTES

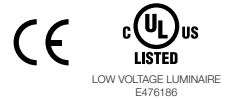
- + Purchase replacement lamps online at www.bocci.ca/lamps
- + Unless otherwise noted when ordering, all chandeliers will be outfitted to be xenon compatible.
- + As an alternative to built-in transformers, Bocci strongly recommends mounting transformers remotely in an easily accessible and hidden location for ease of long-term maintenance.

Worldwide patents pending
EU Patent # 03611144 - 0005-0009

Made in Vancouver, Canada

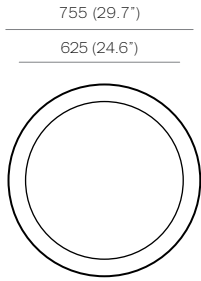
Vancouver
sales@bocci.ca
www.bocci.ca

Berlin
europe@bocci.ca
www.bocci.ca



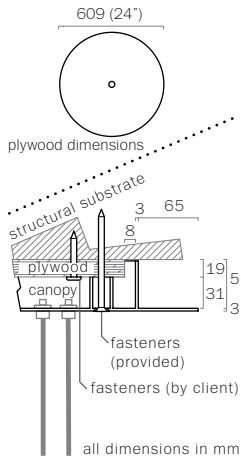
ROUND
87.36 Design by Omer Arbel
PRODUCT SPECIFICATION





1

Measure and mark the light fixture canopy position on the ceiling



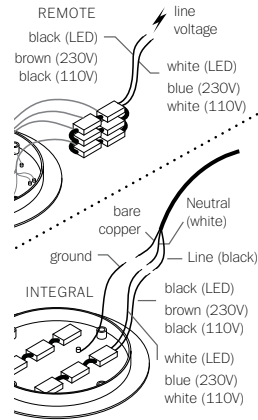
2

Note: The client is responsible for providing a robust 19mm (3/4") plywood backing or wood blocking to securely anchor to the structural substrate.

Connections from the plywood to the structural substrate are the client's responsibility.

Measure the plywood so that it fits within the canopy side walls (refer to detail above).

Anchor the plywood backing to the structural ceiling substrate.



3

Connect transformers inside the canopy to line voltage.

Xenon (110V) or LED: connect the black wire to black and white wire to white wire.

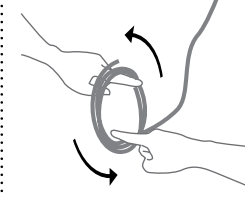
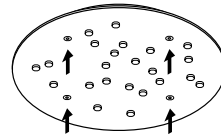
Xenon (230V): connect black wire to brown wire and white wire to blue wire.

For the ground connection, connect the green wire with yellow stripe to the bare copper wire or green wire in the junction box.

Note: As an option, Bocci recommends mounting transformers remotely in a close, accessible and hidden location for ease of long term maintenance. Installation to be done by certified personnel to ensure compliance with the code.

4

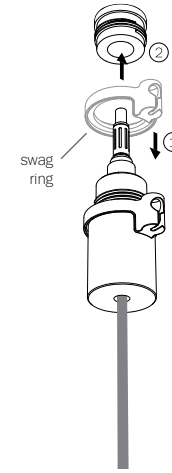
Anchor canopy into the plywood backing using the fasteners provided.



5

Very carefully uncoil the braided coaxial cable in a spool like manner. Insert your index fingers into opposite sides of the roll then rotate your fingers around each other to unroll the coaxial cable.

Use patience: allow the cable to uncoil completely to avoid kinks.



6

Each pendant terminates in a "headphone jack" type connector, which plugs into a receiving receptacle in the canopy.

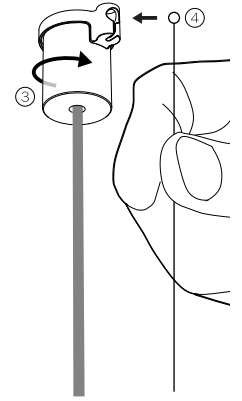
Rest the swag ring on the threaded sheath.

Plug in headphone jack.

7

Turn the threaded sheath into place by hand ensuring that it is adequately tightened. Tools are not required.

Slide the ball end of the aircraft cable into the swag ring slot and pull down. Make sure the aircraft cable is seated properly.



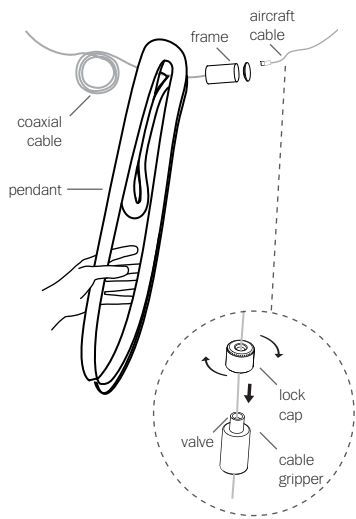
ROUND

87.36

Design by Omer Arbel
PRODUCT INSTALLATION INSTRUCTIONS

© 2017, Bocci Design and Manufacturing Inc. All rights reserved. Any inquiries should be directed to: info@bocci.ca

BOCCI

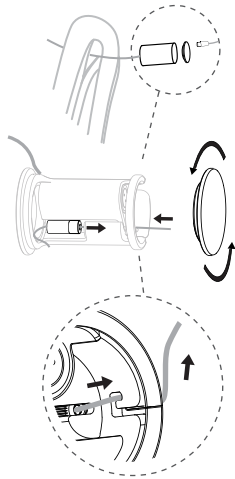


8

Loosen the lock cap and push the valve on the cable gripper and adjust the position of the cable gripper so that the aircraft cable is roughly the same length as the coaxial cable.

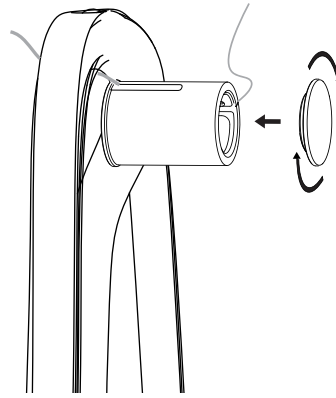
Thread the lock cap back into place, hand tighten and apply a load to the cable to ensure it is locked.

Thread the frame assembly through the top hole of the 87 pendant.



9

Unscrew frame cap opposite to the coaxial cable. Hook the cable gripper into the pocket inside the frame and guide the cable through the u-shaped hook in the frame and the silicone tube.



10

Screw frame cap back onto the frame assembly.



11

Rest pendant onto frame assembly.

If needed, repeat step 8 to adjust the position of frame.

Note: Frame assembly should hang level. The swag cable and the coaxial cable should be approximately the same length.



12

Clean fingerprints from glass surfaces.

Turn fixture on.

For additional assistance, please contact Bocci:

Vancouver
sales@bocci.ca
www.bocci.ca

Berlin
europe@bocci.ca
www.bocci.ca

Worldwide patents pending
EU Patent # 03611144 - 0005-0009

Made in Vancouver, Canada



LOW VOLTAGE LUMINAIRE
E476186

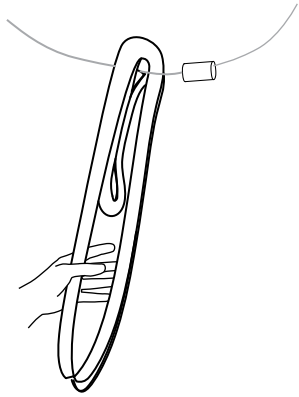
ROUND

87.36

Design by Omer Arbel
PRODUCT INSTALLATION INSTRUCTIONS

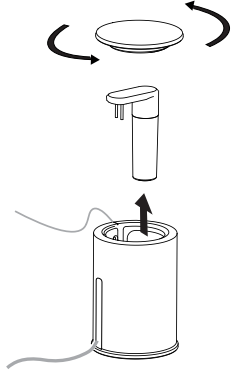
© 2017, Bocci Design and Manufacturing Inc. All rights reserved. Any inquiries should be directed to: info@bocci.ca

BOCCI



1

Lift glass off of lamp holder assembly and hold securely.



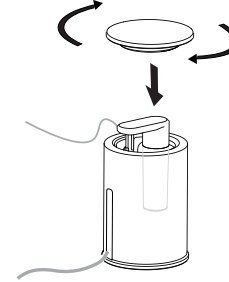
2

Unscrew cap at the aircraft cable end of the lamp holder assembly. Push coaxial cable through the slot in the silicone sheath, and remove lamp and lamp adapter.



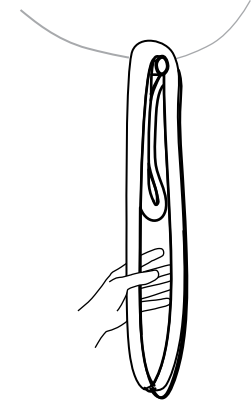
3

Remove lamp from lamp adapter and replace with new bulb.



4

Screw cap back onto the lamp holder assembly.



5

Gently rest pendant back onto lamp holder assembly.

Clean fingerprints from glass surfaces.

Turn fixture on.

For additional assistance,
please contact Bocci:

Vancouver
sales@bocci.ca
www.bocci.ca

Berlin
europe@bocci.ca
www.bocci.ca

Worldwide patents pending
EU Patent # 03611144 - 0005-0009

Made in Vancouver, Canada



LOW VOLTAGE LUMINAIRE
E476186

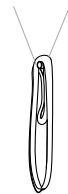
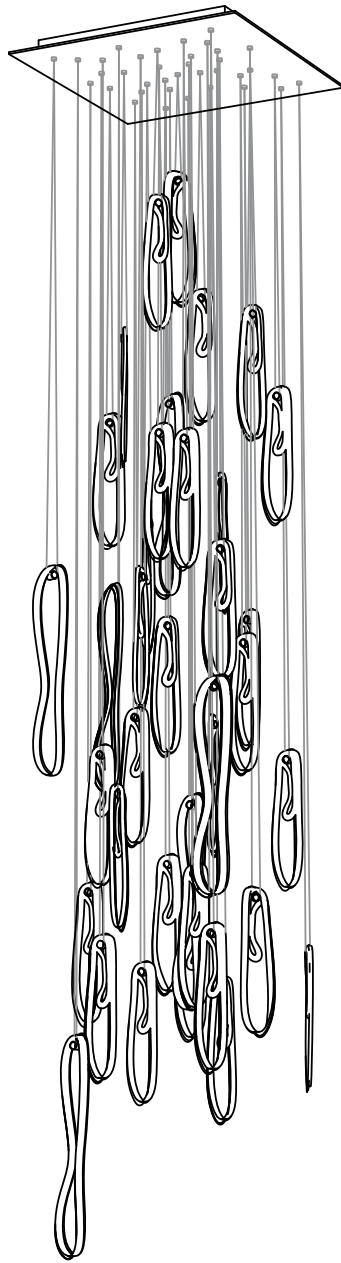
ROUND

87.36

Design by Omer Arbel
LAMP REPLACEMENT INSTRUCTIONS

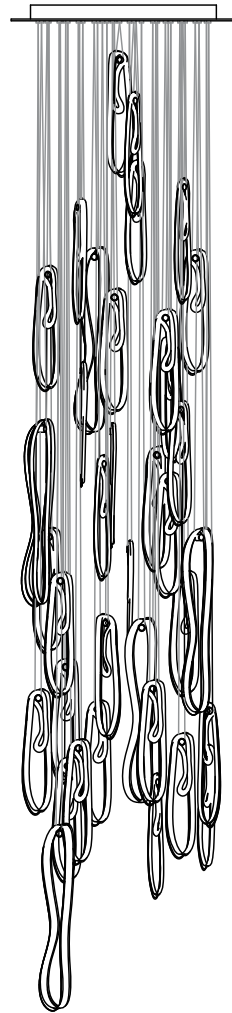
© 2017, Bocci Design and Manufacturing Inc. All rights reserved. Any inquiries should be directed to: info@bocci.ca

BOCCI



±300-500
(12-20')

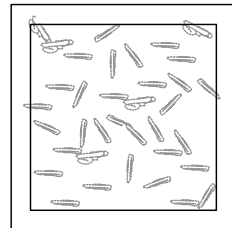
±115-240
(4.5-9.5')



| 53 (2')

3000
(10')
standard

up to
30500
(100')
custom



625
(24.6")

755
(29.7")

approx 68.6kg (151lb)

- PENDANTS: thirty-six
- MOUNTING: white powder coated square canopy 755mm (29.7") x 53mm (2") deep
- LAMPING: 1.8w LED or 10w xenon
- COAX: fixed lengths. 3000mm (10') standard / up to 30500mm (100') maximum
- MATERIALS: pulled glass, braided metal coaxial cable, electrical components, white powder coated canopy
- WEIGHT: approximately 68.6kg (151lb)
- TRANSFORMERS: integral (remote mount recommended)

DESCRIPTION

87.36 is a random configuration of thirty six 87 pendants hung from a square canopy. The drop lengths of the pendants are randomized between a client specified range of heights to variously cluster and scatter. The result is an ambient installation or field of light.

A matrix of hot glass is stretched and folded back onto itself numerous times as it cools. Air is trapped between the folds and stretched along the grain of the loop, creating microfilaments that give the piece a pearlescent optical quality. A LED light source is introduced at one end of the loop casting light through the microfilaments and registering a gentle gradient.

NOTES

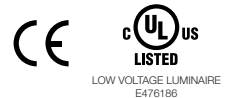
- + Purchase replacement lamps online at www.bocci.ca/lamps
- + Unless otherwise noted when ordering, all chandeliers will be outfitted to be xenon compatible.
- + As an alternative to built-in transformers, Bocci strongly recommends mounting transformers remotely in an easily accessible and hidden location for ease of long-term maintenance.

Worldwide patents pending
EU Patent # 03611144 - 0005-0009

Made in Vancouver, Canada

Vancouver
sales@bocci.ca
www.bocci.ca

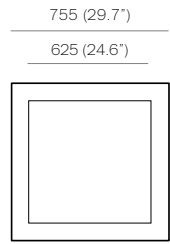
Berlin
europe@bocci.ca
www.bocci.ca



SQUARE

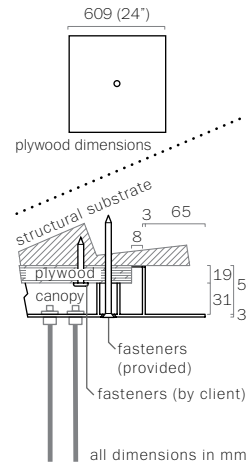
87.36

Design by Omer Arbel
PRODUCT SPECIFICATION



1

Measure and mark the light fixture canopy position on the ceiling



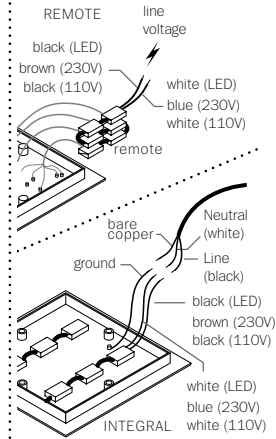
2

Note: The client is responsible for providing a robust 19mm (3/4") plywood backing or wood blocking to securely anchor to the structural substrate.

Connections from the plywood to the structural substrate are the client's responsibility.

Measure the plywood so that it fits within the canopy side walls (refer to detail above).

Anchor the plywood backing to the structural ceiling substrate.



3

Connect transformers inside the canopy to line voltage.

Xenon (110V) or LED: connect the black wire to black and white wire to white wire.

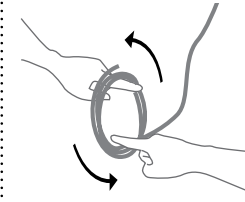
Xenon (230V): connect black wire to brown wire and white wire to blue wire.

For the ground connection, connect the green wire with yellow stripe to the bare copper wire or green wire in the junction box.

Note: As an option, Bocci recommends mounting transformers remotely in a close, accessible and hidden location for ease of long term maintenance. Installation to be done by certified personnel to ensure compliance with the code.

4

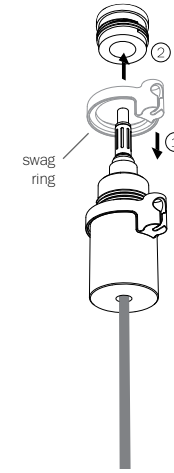
Anchor canopy into the plywood backing using the fasteners provided.



5

Very carefully uncoil the braided coaxial cable in a spool like manner. Insert your index fingers into opposite sides of the roll then rotate your fingers around each other to unroll the coaxial cable.

Use patience: allow the cable to uncoil completely to avoid kinks.



6

Each pendant terminates in a "headphone jack" type connector, which plugs into a receiving receptacle in the canopy.

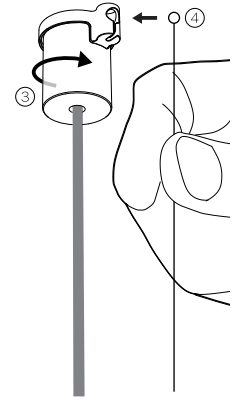
Rest the swag ring on the threaded sheath.

Plug in headphone jack.

7

Turn the threaded sheath into place by hand ensuring that it is adequately tightened. Tools are not required.

Slide the ball end of the aircraft cable into the swag ring slot and pull down. Make sure the aircraft cable is seated properly.



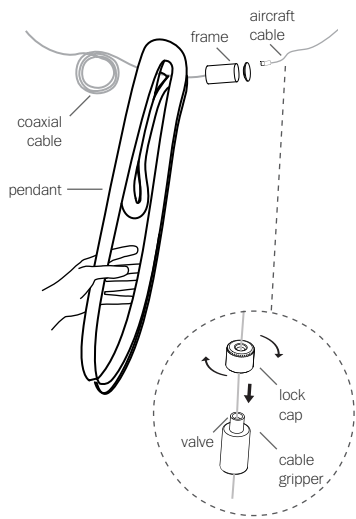
SQUARE

87.36

Design by Omer Arbel
PRODUCT INSTALLATION INSTRUCTIONS

© 2017, Bocci Design and Manufacturing Inc. All rights reserved. Any inquiries should be directed to: info@bocci.ca

BOCCI

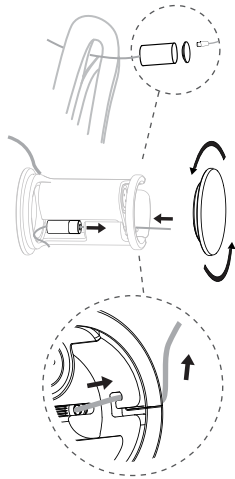


8

Loosen the lock cap and push the valve on the cable gripper and adjust the position of the cable gripper so that the aircraft cable is roughly the same length as the coaxial cable.

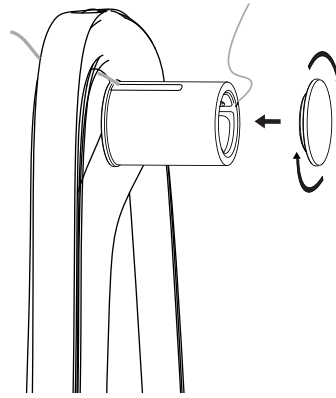
Thread the lock cap back into place, hand tighten and apply a load to the cable to ensure it is locked.

Thread the frame assembly through the top hole of the 87 pendant.



9

Unscrew frame cap opposite to the coaxial cable. Hook the cable gripper into the pocket inside the frame and guide the cable through the u-shaped hook in the frame and the silicone tube.



10

Screw frame cap back onto the frame assembly.

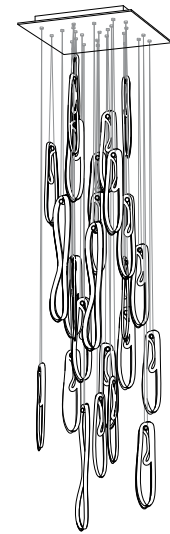


11

Rest pendant onto frame assembly.

If needed, repeat step 8 to adjust the position of frame.

Note: Frame assembly should hang level. The swag cable and the coaxial cable should be approximately the same length.



12

Clean fingerprints from glass surfaces.

Turn fixture on.

For additional assistance, please contact Bocci:

Vancouver
sales@bocci.ca
www.bocci.ca

Berlin
europe@bocci.ca
www.bocci.ca

Worldwide patents pending
EU Patent # 03611144 - 0005-0009

Made in Vancouver, Canada



LOW VOLTAGE LUMINAIRE
E476186

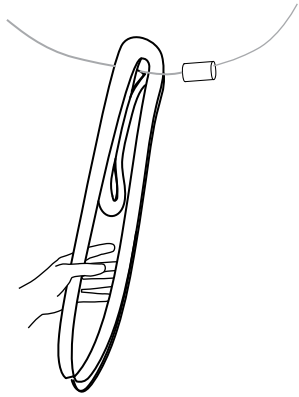
SQUARE

87.36

Design by Omer Arbel
PRODUCT INSTALLATION INSTRUCTIONS

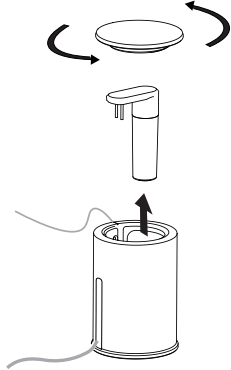
© 2017, Bocci Design and Manufacturing Inc. All rights reserved. Any inquiries should be directed to: info@bocci.ca

BOCCI



1

Lift glass off of lamp holder assembly and hold securely.



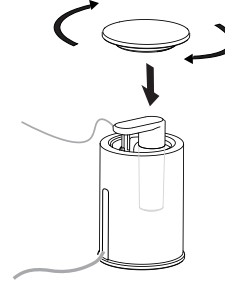
2

Unscrew cap at the aircraft cable end of the lamp holder assembly. Push coaxial cable through the slot in the silicone sheath, and remove lamp and lamp adapter.



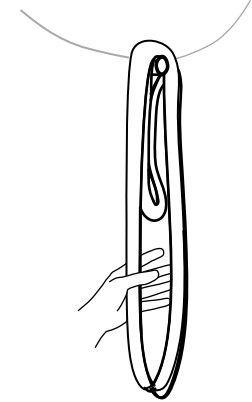
3

Remove lamp from lamp adapter and replace with new bulb.



4

Screw cap back onto the lamp holder assembly.



5

Gently rest pendant back onto lamp holder assembly.

Clean fingerprints from glass surfaces.

Turn fixture on.

For additional assistance,
please contact Bocci:

Vancouver
sales@bocci.ca
www.bocci.ca

Berlin
europe@bocci.ca
www.bocci.ca

Worldwide patents pending
EU Patent # 03611144 - 0005-0009

Made in Vancouver, Canada



LOW VOLTAGE LUMINAIRE
E476186

SQUARE

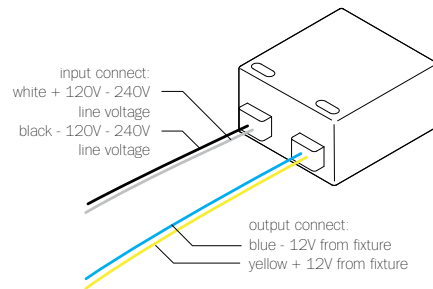
87.36

Design by Omer Arbel
LAMP REPLACEMENT INSTRUCTIONS

© 2017, Bocci Design and Manufacturing Inc. All rights reserved. Any inquiries should be directed to: info@bocci.ca

BOCCI

120/240V LED Driver - 4W



B-L03U-12V

PRIMARY: AC 100 - 240V, 120mA, 50/60Hz

SECONDARY: Max. 12V DC (4.2w max.)

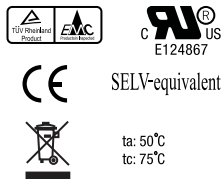
LAMPING: 1w LED lamps: 1-3
1.5w LED lamps: 1-2
1.8w LED lamps: 1-2
2.3w ring LED lamps: 1

DIMMING: Non-dimmable

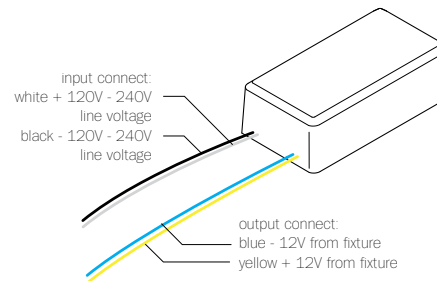
NOTES: Constant voltage
Class 2 power unit
For LED lamps only

DIMENSION: 43mm (1.7") x 41mm (1.6") x 22mm (0.8")

DESIGNATION:



120/240V LED Driver - 8W



B-L07U-12V

PRIMARY: AC 100 - 240V, 170mA, 50/60Hz

SECONDARY: Max. 12V DC (8.4w max.)

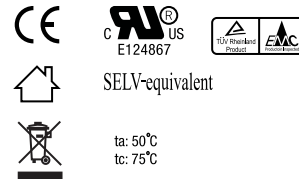
LAMPING: 1w LED lamps: 1-7
1.5w LED lamps: 1-5
1.8w LED lamps: 1-4
2.3w ring LED lamps: 1-3

DIMMING: Non-dimmable

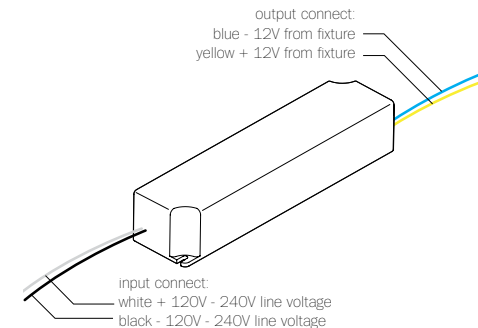
NOTES: Constant voltage
Class 2 power unit
For LED lamps only

DIMENSION: 65mm (2.5") x 35mm (1.3") x 28mm (1.1")

DESIGNATION:



120/240V LED Driver - 24W



B-L24U-12V

PRIMARY: AC 100 - 240V, 300mA, 60Hz

SECONDARY: Max. 12V DC (24w max.)

LAMPING: 1w LED lamps: 1-24
1.5w LED lamps: 1-16
1.8w LED lamps: 1-13
2.3w ring LED lamps: 1-10

DIMMING: Dimmable using minimum 8 lamps and improves with larger load. Use low voltage electronic dimmers only

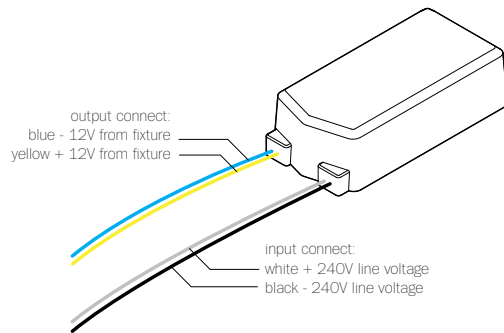
NOTES: Short Circuit Protection
Constant voltage
Class 2 power unit
For LED lamps only

DIMENSION: 42mm (1.7") x 170mm (6.7") x 33mm (1.3")

DESIGNATION:



120V Transformer



WH-601E6A-3C

PRIMARY: AC 120V 50/60Hz, 500mA

SECONDARY: 12V AC (10w min. - 60w max.)

LAMPING: 10w lamps: 1-6
20w lamps: 1-3

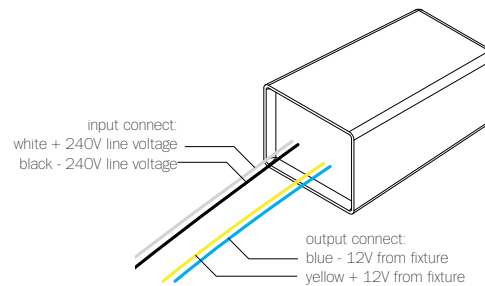
DIMMING: Dimmable using minimum 2 x 10w lamps or 1 x 20w lamp using low voltage electronic and trailing edge dimmers only.

NOTES: Auto stop protected
Class 2 power unit
Electronic transformer for xenon lamps only

DIMENSION: 70mm (2.8") x 36mm (1.4") x 20mm (0.75")

DESIGNATION:  

240V Transformer



WH-602W

PRIMARY: AC 230V-240V 50Hz, 260mA

SECONDARY: 11.5V AC (10w min. - 60w max.)

LAMPING: 10w lamps: 1-6
20w lamps: 1-3

DIMMING: Dimmable using minimum 2 x 10w lamps or 1 x 20w lamp using low voltage electronic and trailing edge dimmers only.

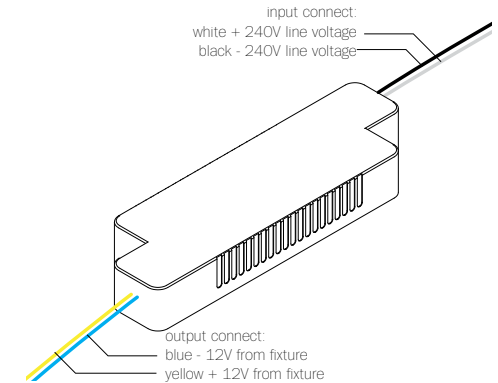
NOTES: Auto stop protected
Class 2 power unit
Electronic transformer for xenon lamps only

DIMENSION: 63mm (2.5") x 35mm (1.4") x 26mm (1")

DESIGNATION:    

IP65   ta: 50°C
tc: 80°C

240V Transformer



WH-602S

PRIMARY: AC 230V-240V 50Hz, 260mA

SECONDARY: 11.5V AC (10w min. - 60w max.)

LAMPING: 10w lamps: 1-6
20w lamps: 1-3

DIMMING: Dimmable using minimum 2 x 10w lamps or 1 x 20w lamp using low voltage electronic and trailing edge dimmers only.

NOTES: Auto stop protected
Class 2 power unit
Electronic transformer for xenon lamps only

DIMENSION: 117mm (4.5") x 36mm (1.4") x 16mm (0.6")

DESIGNATION:   

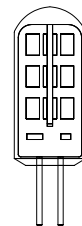
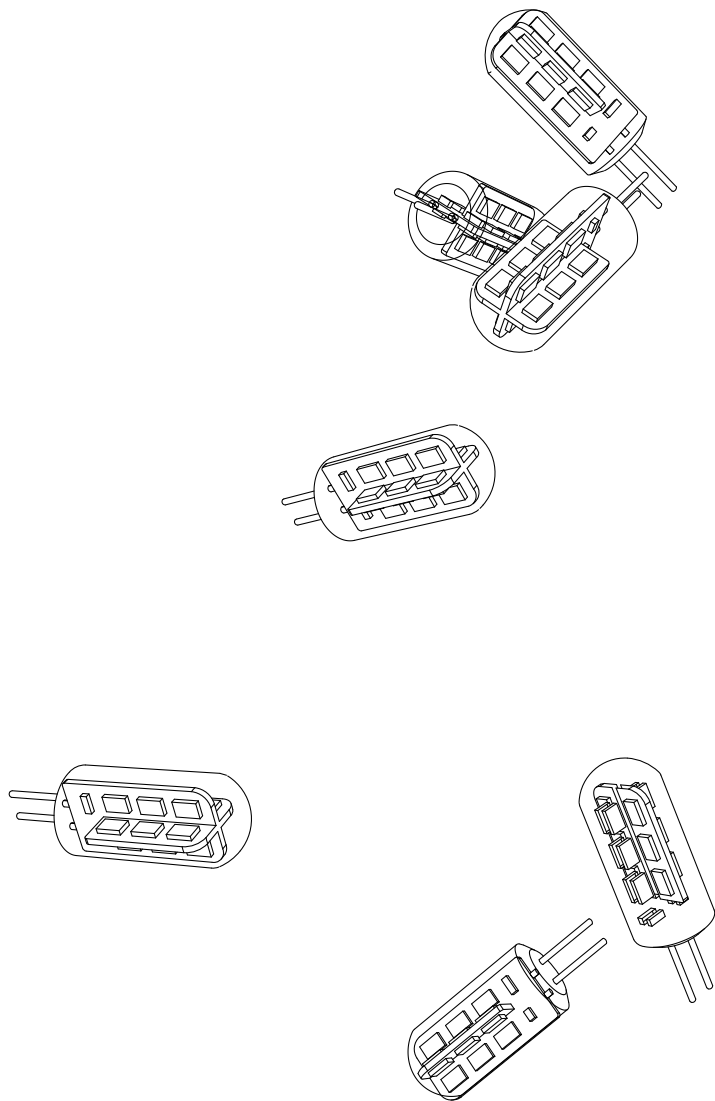
   

LED

1.8W

Design by Omer Arbel
PRODUCT SPECIFICATION



38 (1.5")



12.5 (0.5")

WATTAGE: 1.8w
 COLOUR TEMPERATURE: 2600k
 CRI: 75 (100 is daylight)
 LIGHT OUTPUT: 142 lumens
 EFFICIENCY: 60 lm/w
 LAMP LIFE: 25,000 hours

DESCRIPTION

The Bocci 1.8w LED lamping option offers a longer-life, energy efficient alternative to typical halogen or xenon lamps. This proprietary and worldwide patent pending design utilizes Bocci's standard G4 lamp holder (9.1mm/0.36" in diameter), which is designed to accept either the Bocci xenon lamp or the Bocci LED lamp. The possibility of dual usage allows the opportunity for existing chandeliers with xenon lamping to be retrofitted on site to LED along with the appropriate driver.

This unique replacement design is unlike typical embedded xenon fixtures as it eliminates the waste associated with catastrophic failures that leave no choice but to replace the entire fixture. When it comes time to relamp, the xenon heads may simply be replaced, as with conventional lamps. Bocci xenon lamp keeps the fixture out of landfills in the future, protects your investment and introduces a significant saving of energy.

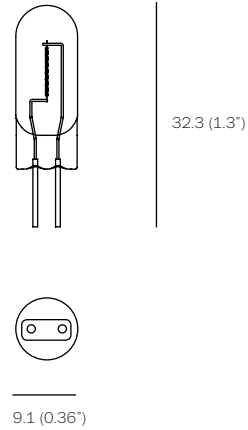
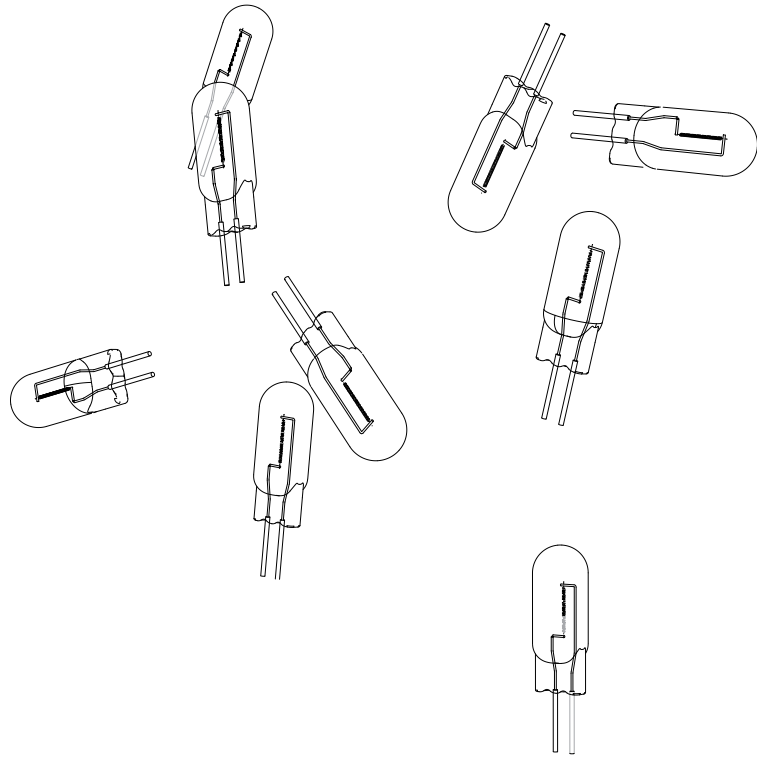
NOTES

+ Purchase replacement lamps online at www.bocci.ca/lamps

RoHS 

Vancouver
sales@bocci.ca
www.bocci.ca

Berlin
europe@bocci.ca
www.bocci.ca



WATTAGE: 10w
 COLOUR TEMPERATURE: 2600k
 CRI: 100 (100 is daylight)
 LIGHT OUTPUT: 81 lumens
 EFFICIENCY: 8.3 lm/w
 DIMMABLE: yes
 LAMP LIFE: 20,000 hours

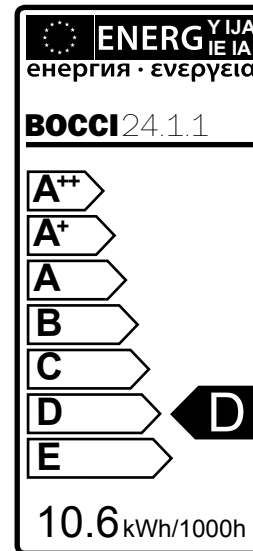
DESCRIPTION

The Bocci 10w xenon lamping option offers a longer-life, energy efficient alternative to typical halogen or xenon lamps. This proprietary and worldwide patent pending design utilizes Bocci's standard G4 lamp holder (9.1mm/0.36" in diameter), which is designed to accept either the Bocci xenon lamp or the Bocci LED lamp. The possibility of dual usage allows the opportunity for existing chandeliers with xenon lamping to be retrofitted on site to LED along with the appropriate driver.

This unique replacement design is unlike typical embedded xenon fixtures as it eliminates the waste associated with catastrophic failures that leave no choice but to replace the entire fixture. When it comes time to relamp, the xenon heads may simply be replaced, as with conventional lamps. Bocci xenon lamp keeps the fixture out of landfills in the future, protects your investment and introduces a significant saving of energy.

NOTES

- + Purchase replacement lamps online at www.bocci.ca/lamps
- + Requires electronic low-voltage, trailing edge dimmer
- + When replacing, do not touch bulb with bare hands



RoHS

Vancouver
sales@bocci.ca
www.bocci.ca

Berlin
europe@bocci.ca
www.bocci.ca

XENON
10W Design by Omer Arbel
 PRODUCT SPECIFICATION