

Superonda

Archizoom Associati
1967

Designed in 1967 by the Florentine Radical group Archizoom, this was the first sofa without a conventional frame. It is composed of two waves made from a polyurethane block cut into two parts with an S-shaped incision, which can be interlocked and stacked to produce different configurations. The lightness and modular design permit a range of various uses: Superonda can be a sofa, a bed or a chaise longue. Like many of the pieces designed by the Archizoom group, it challenges bourgeois conventions, stimulating the creativity and fantasy of the user. The shiny leatherette cover in the basic colors of white, black and red accentuates the pop image.

typology	dynamic sofa
dimension	240[l] x 38[w] x 100[h] cm
materials	structure cut from a block of polyurethane covering shiny PVC coated fabric
colours	white / red / black



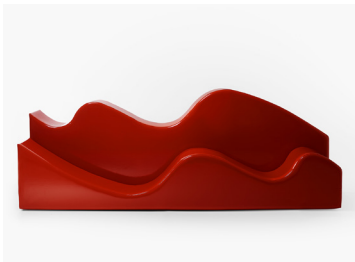
01S



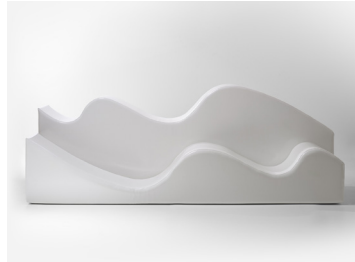
03S



04S



05S



08S



09S



01



02



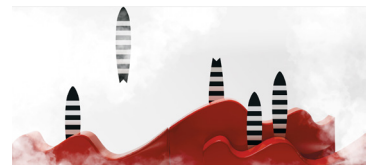
04



06



07



08

© Pietro Savorelli / Centro Studi Poltronova



poltronova

Centro Studi Poltronova per il Design
press@centrostudipoltronova.it
archivio@centrostudipoltronova.it
www.poltronova.it