

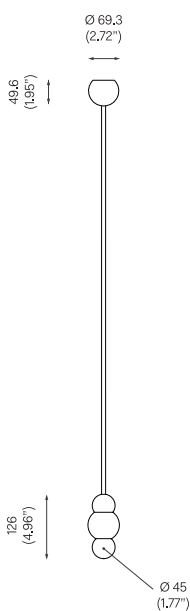


**BALL LIGHT SMALL
PENDANT ROD, 2008**

Polished Brass.
Pendant rod length to order.

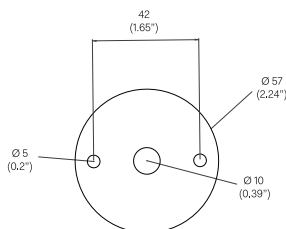


OVERALL DIMENSIONS



BACKPLATE DIMENSIONS

Mounting screws not included
5mm countersunk screw recommended



MATERIALS AND FINISHES



MA-BLS-CRP-PBR
Polished Brass

BULB SPECIFICATIONS

G9 2W LED Bulb
250lm / 2700K

PRODUCT SPECIFICATIONS

Input voltage: 120V / 240V
Maximum wattage: 5W
120V / 240V dimmable LED triac
Product weight: 2kg

Please supply required drop length of fixture,
measured from the ceiling to bottom fitting at
time of order.

Minimum total drop length 210mm.
Maximum total drop length 2090mm.

Please allow 25mm tolerance of drop length.

120V version supplied with paintable junction
box cover.

CLEANING INSTRUCTIONS

Before cleaning, lighting fixtures must
be turned off and unplugged from mains
electricity. Whilst cleaning please take care
and use the gloves provided.

Polished brass: As the item is unlacquered
it will naturally oxidise and darken. Upon
touching the items without gloves, fingerprints
are likely to occur and leave marks. Use
a good quality brass cleaning liquid and
follow the product instructions using the
extra soft dust cloth. Do not apply pressure
on persistent marks. Remove them using
repeated gentle motions and by reapplying
the brass cleaning liquid.

Opaline Glass: Remove the opaline glass from
the product. Using a lightly damp cloth, clean
only the outside of the sphere. Only put the
glass sphere back on the product once it is
fully dry.

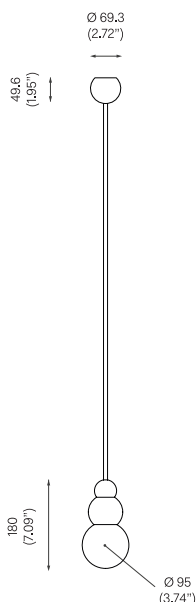


BALL LIGHT
LARGE PENDANT ROD, 2008

Polished Brass.
Pendant rod length to order.

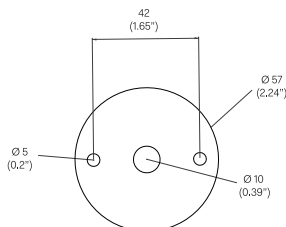


OVERALL DIMENSIONS



BACKPLATE DIMENSIONS

Mounting screws not included
5mm countersunk screw recommended



MATERIALS AND FINISHES



MA-BLL-CRP-PBR
Polished Brass

BULB SPECIFICATIONS

G9 3.5W LED Bulb
330lm / 2700K

PRODUCT SPECIFICATIONS

Input voltage: 120V / 240V
Maximum wattage: 20W
120V / 240V dimmable LED triac
Product weight: 3kg

Please supply required drop length of fixture,
measured from the ceiling to bottom fitting at
time of order.

Minimum total drop length 260mm.
Maximum total drop length 2125mm.

Please allow 25mm tolerance of drop length.

120V version supplied with paintable junction
box cover.

CLEANING INSTRUCTIONS

Before cleaning, lighting fixtures must
be turned off and unplugged from mains
electricity. Whilst cleaning please take care
and use the gloves provided.

Polished brass: As the item is unlacquered
it will naturally oxidise and darken. Upon
touching the items without gloves, fingerprints
are likely to occur and leave marks. Use
a good quality brass cleaning liquid and
follow the product instructions using the
extra soft dust cloth. Do not apply pressure
on persistent marks. Remove them using
repeated gentle motions and by reapplying
the brass cleaning liquid.

Opaline Glass: Remove the opaline glass from
the product. Using a lightly damp cloth, clean
only the outside of the sphere. Only put the
glass sphere back on the product once it is
fully dry.