

# Eames Coffee Table

Charles & Ray Eames, 1953

**vitra.**



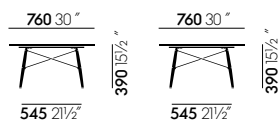
In 1949, Charles and Ray Eames designed a coffee table as a unique furnishing for their own residence, the legendary Eames House in Pacific Palisades, near Los Angeles. Ever since, the table has contributed to the unique decor of this historic home interior. The rectangular table top, which gives a simultaneous impression of simplicity and luxury, was originally covered in gold leaf. Its dowel-leg base is a variation of the wooden base found on the Eames Plastic Chairs. In the following years, Charles and Ray Eames produced two more of these tables with different tops, one in marble and the other in wood.

The re-edition of the Eames Coffee Table, which was developed by Vitra in cooperation with the Eames Office, evokes the spirit of the early one-off pieces: fabricated in exquisite materials, this high-quality coffee table is both precious object and utilitarian furnishing. The square or rectangular table tops are made of marble or solid American walnut. The base, combining wooden legs with metal cross-struts, provides a stable understructure and emphasises the understated elegance of the Eames Coffee Table.

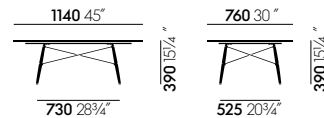
## Materials

- **Table top:** solid American walnut (USA), oiled finish; Carrara marble, brushed and waxed.
- **Base platform:** MDF board.
- **Base:** solid ash (Western Europe, Poland), honey-coloured or black finish; steel rod cross struts, powder-coated in basic dark.

## DIMENSIONS



Eames Coffee Table square



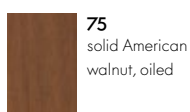
Eames Coffee Table rectangular

## COLOURS AND MATERIALS

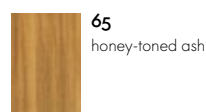


50  
marble Carrara

Table top

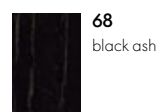


75  
solid American  
walnut, oiled



65  
honey-toned ash

Base



68  
black ash

